

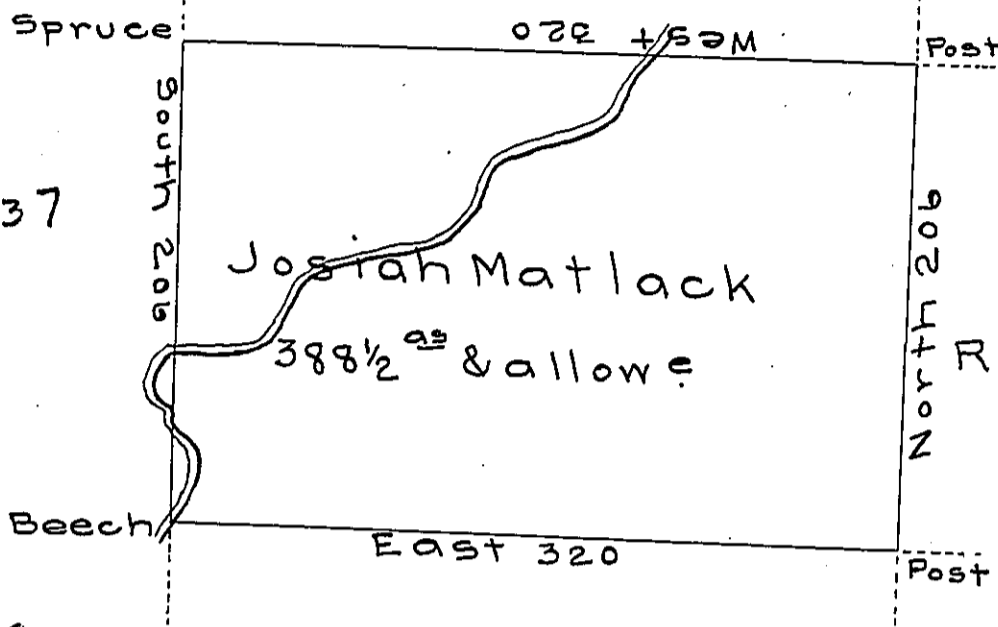
C-8-139

Francis Lesher

A-8-136

A-28-296

A-8-137  
Vacant



Robt. Smith  
A-28-300

A-22-139

Amos Cooper  
C-33-270

C-63-31

A draught of a tract of land called—situate on the waters of Wolusing creek joining land surveyed for Francis Lesher & others in Luzern—(formerly Northum<sup>d</sup>) county containing three hundred & eighty eight acres  $\frac{1}{2}$  & allowe of six  $\phi$  cent for roads & surveyed for Josiah Matlack the 30<sup>th</sup> day of August 1787 in pursuance of a warrant dated the 27<sup>th</sup> day of July 1787

by  
 To John Lukens Esqr } W<sup>m</sup> Gray D.S.  
 Surv: Gen! }

IN TESTIMONY that the above is a copy of the original remaining on file in the Department of Internal Affairs of Pennsylvania, made conformably to an Act of Assembly approved the 16th day of February, 1833, I have hereunto set my Hand and caused the Seal of said Department to be affixed at Harrisburg, this nineteenth day of January 1906

*Isaac P. Pearson*  
 Secretary of Internal Affairs.